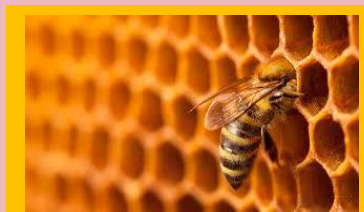




This week, the children have been enthusiastically rehearsing their Spring songs and lines in preparation for Reception's Spring Assembly on 7th April. It promises to be a wonderful performance, and we are excited to welcome you on the day. Kindly note that, due to the hall's capacity, we can only accommodate two family members per child. Thank you for your understanding!



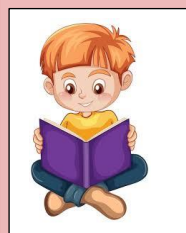
On Monday we caught up with our friend Donya, farmer of Peacock Farm near Muston, in Leicestershire. Did you know that worker bees only produce around 1 teaspoon of honey in their lifetime? This was one of the fantastic facts shared by beekeeper Farmer Donya during farmer time. We got a tour of one of the hives and spotted the queen bee. We also found out that bees travel incredible distances and use their sting only to protect the honey. The children were keen to discuss their favourite honey dishes - maybe you could buy and try some local honey when you next get the chance.



We have recently started our new History enquiry, 'The Crown'. This week, we explored the line of enquiry: 'Why do people wear hats?'. The children amazed us with their thoughtful ideas, looking beyond practical reasons like protection from the weather. They delved into the significance of special hats, developing their oracy skills by sharing their prior knowledge, actively listening to one another, and discovering new facts together. Next week we will be focusing on 'What is a crown and who wears one?'



In PE we have enjoyed learning about relay racing and working as a team to develop our relay skills by passing a foam disc along a line in a few different ways, being careful not to drop it. This is a great way to strengthen our gross motor skills and build co-ordination.



Next week, we will be conducting the children's phonics assessments once again to ensure they are reading at the level that suits them best. As we work to foster a love of reading, it's essential to focus on building confidence first. From there, we can encourage practice to develop fluency, expression, and comprehension. Thank you for your continued support in nurturing these skills.



Reminder: Drop off in the mornings

A gentle reminder to please drop your child/ children directly at the Reception school gate each morning. This allows the teaching staff to greet you and welcome the children through the open gate. Kindly avoid standing away from the gate to drop your child off, you must hand them over to the teaching staff at the gate to ensure smooth and efficient entry for everyone.

Important diary dates and information

4.4.25	Vision screening (Child vision screening information for parents - GOV.UK)
7.4.25	Reception's Spring Assembly, 2.30pm (Please note that due to our hall's capacity we can only invite two family members per child)
10.4.25	Southridge Sponsored Fun Run
11.4.25	Break up for the Easter Holidays
28.4.25	Return to school

Reminders:

- Children are not permitted to ride scooters or bikes on the playground. Please ensure your child dismounts their bike/ scooter once through the school gates and push the bike/ scooter to the bike hut.
- Your child's 'My Weekly Journal' will be collected this Monday, 31st March. A huge thank you again for your support in completing these with the children. Their confidence in composing a simple sentence is blossoming.
- Please remember to leave your child's reading folder in their bookbag each day. Monday and Fridays are book changing days but we do read with your children through the week.



Southridge First School
'Proud to Make a Positive Impact'